



Coastal Environmental Energy Lab

해안환경에너지 연구실

해안환경 에너지 연구실 소개

Introduction



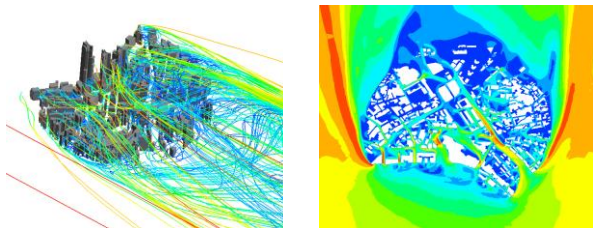
Soonchul Kwon ^{Ph.D}
School of Civil & Environmental Engineering

Specialization : Civil & Environmental
Phone : 051)510-7640
Lab Location : 501 Construction building
Homepage : <http://ceel.pusan.ac.kr>
E-Mail : sckwon@pusan.ac.kr

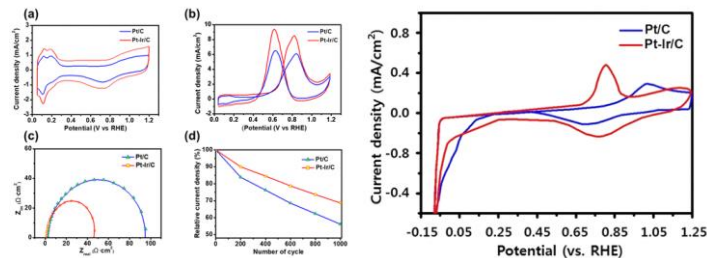
Research Interest

- Study on the prevention of disaster such as skyscraper wind and coastal erosion in coastal areas
- Development and verification of low impact method for urban hydrological Restoration
- Development of catalysts and systems for

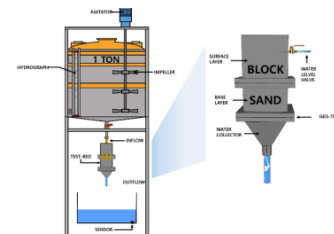
Research Outcomes & Related



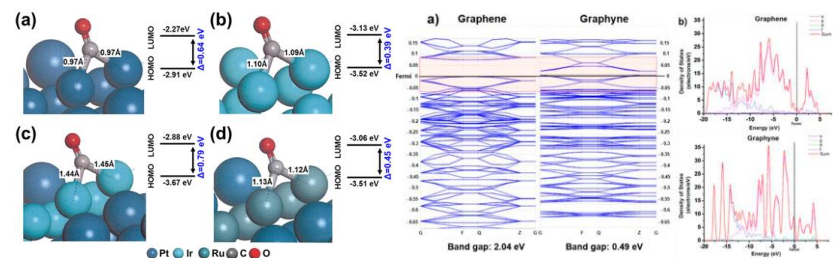
- CFD study on skyscraper wind in Haeundae Area



- Electrochemical performance comparison of materials



- Verification of Low Impact Development techniques



- Quantum mechanical analysis using density functional theory

연구 분야: 빌딩풍

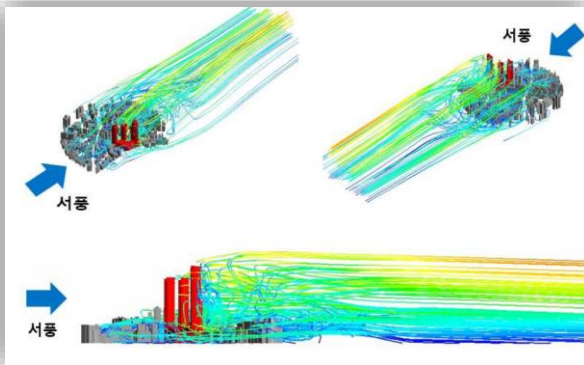
Building Wind



현장 실측



3차원 형상복원



CFD 시뮬레이션



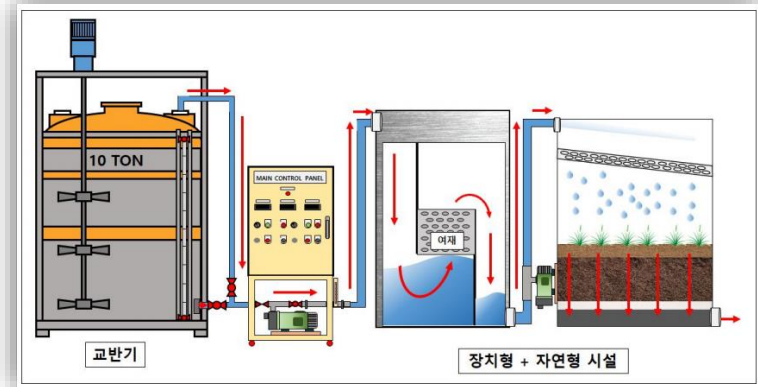
풍동 실험

연구 분야: 저영향 개발 기술 검증

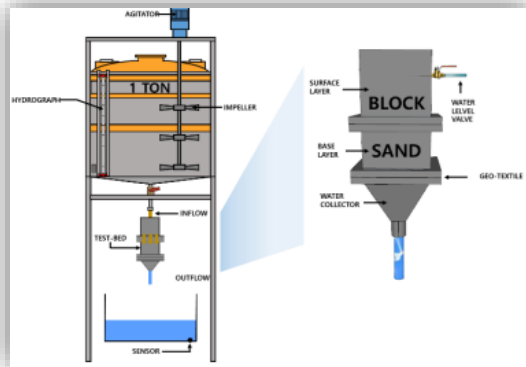
Low Impact Development



GI & LID 센터



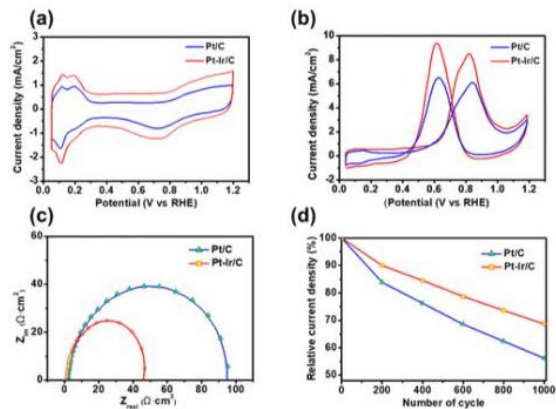
LID 기술 평가



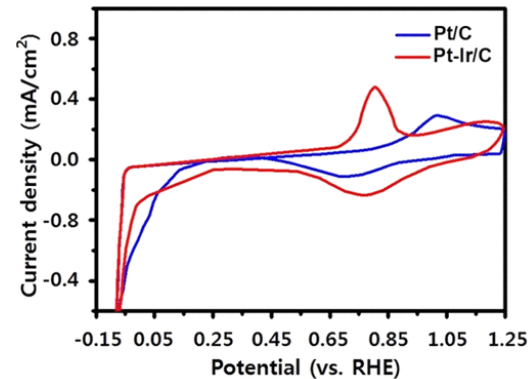
LID 기술 평가

연구 분야: 수전해 기반 연료전지 시스템

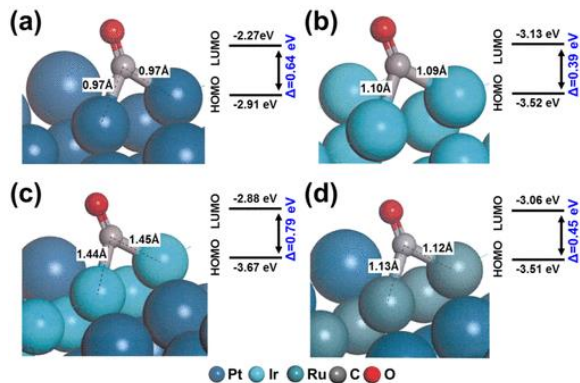
Fuel cell based on water electrolysis



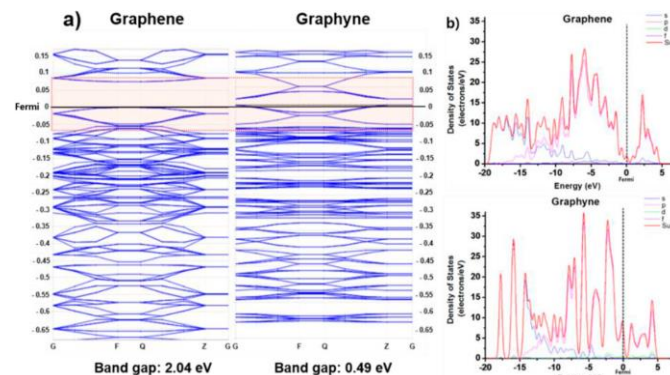
시스템 효율 평가



촉매 성능 평가

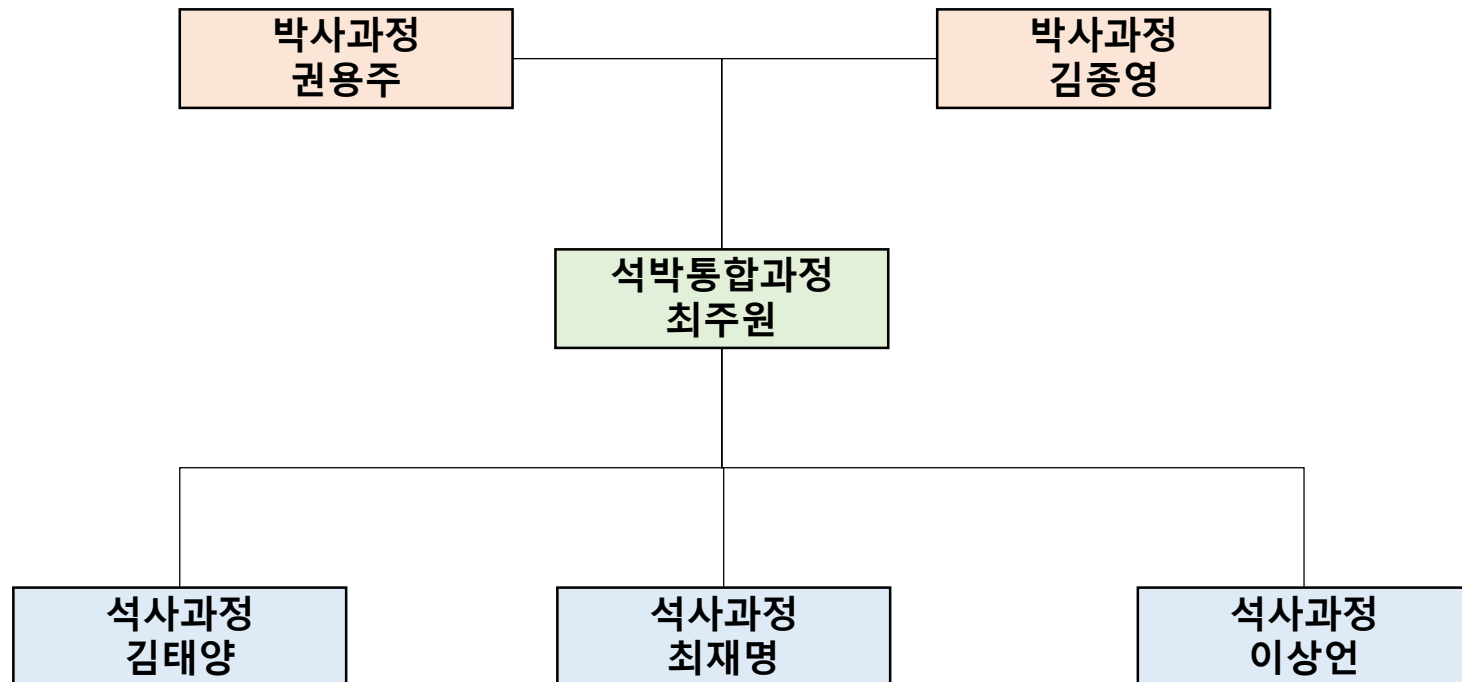


양자역학 기반 DFT 시뮬레이션



조직도

Organization



감사합니다.

